

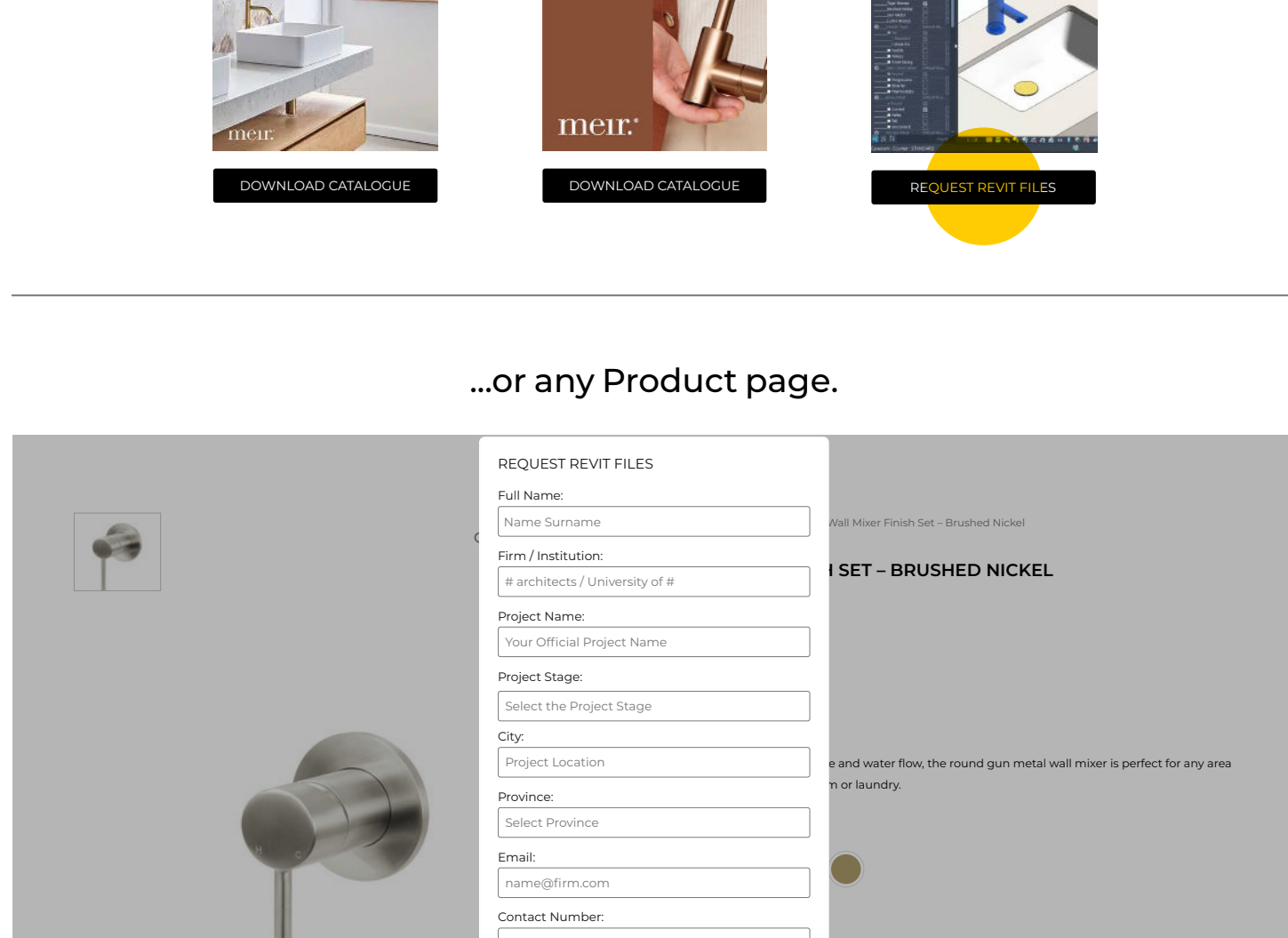
BIM/REVIT GUIDE

Meir uses a smart Design-Oriented BIM system to help designers work faster and more accurately. It allows easy placement and adjustment of products in Revit while keeping all data organised and up to date.

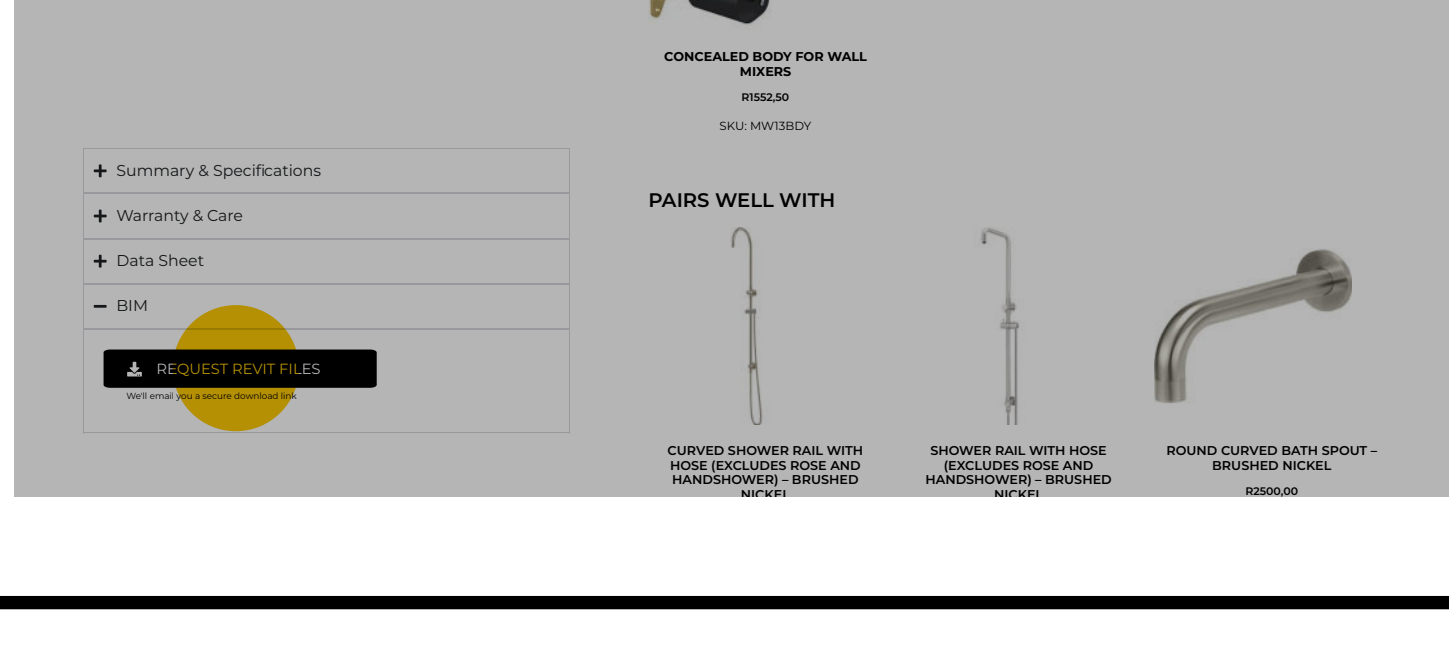
1

Request the BIM Files.

Go to www.meirs.co.za and request the Revit files from either the Downloads or the Request Revit page...



...or any Product page.



2

Check Your Email.

- You will receive a download link after submitting the form
- Check spam if not received
- Always download the latest version

- Revit Family (RFA) v25.03**
The family files for direct use in your Revit project.
 - _Meir Sanware
 - _Meir Accessories
 - _Meir Basin
 - _Meir Sink
 - _Meir WC
 - _Meir Outdoor

- User Manuals**
 - _meirBIM-usermanual v25.03
 - _meirBIM-visualguide v25.03

[Download Revit Files](#)

30 Second Tutorials

Link to YouTube Shorts illustrating how to use the Design-Oriented BIM families inside Revit:

<https://www.youtube.com/playlist?list=PLR9y98-esDe-PqnhCpwwkplMrpv80Dya>

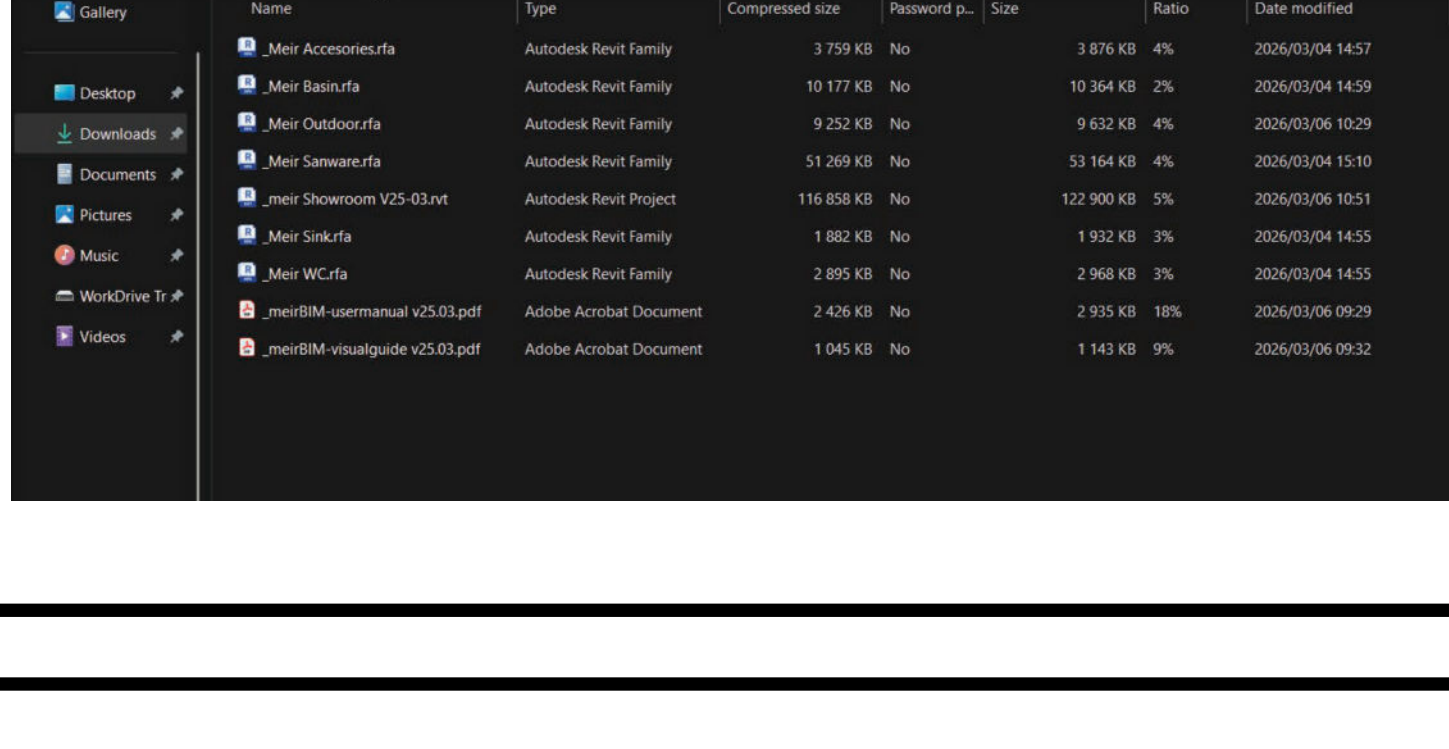
3

What's Included.

- Revit Project File (.rvt)**
 - Showroom project with layouts
 - Pre-built schedules

- Reference Documents (.pdf)**
 - User Manual (Revit Family Logic)
 - Visual Guide (SKU's)

- Revit Families (.rfa)**
 - Sanware
 - Accessories
 - Basins
 - Outdoor
 - Sink
 - WC

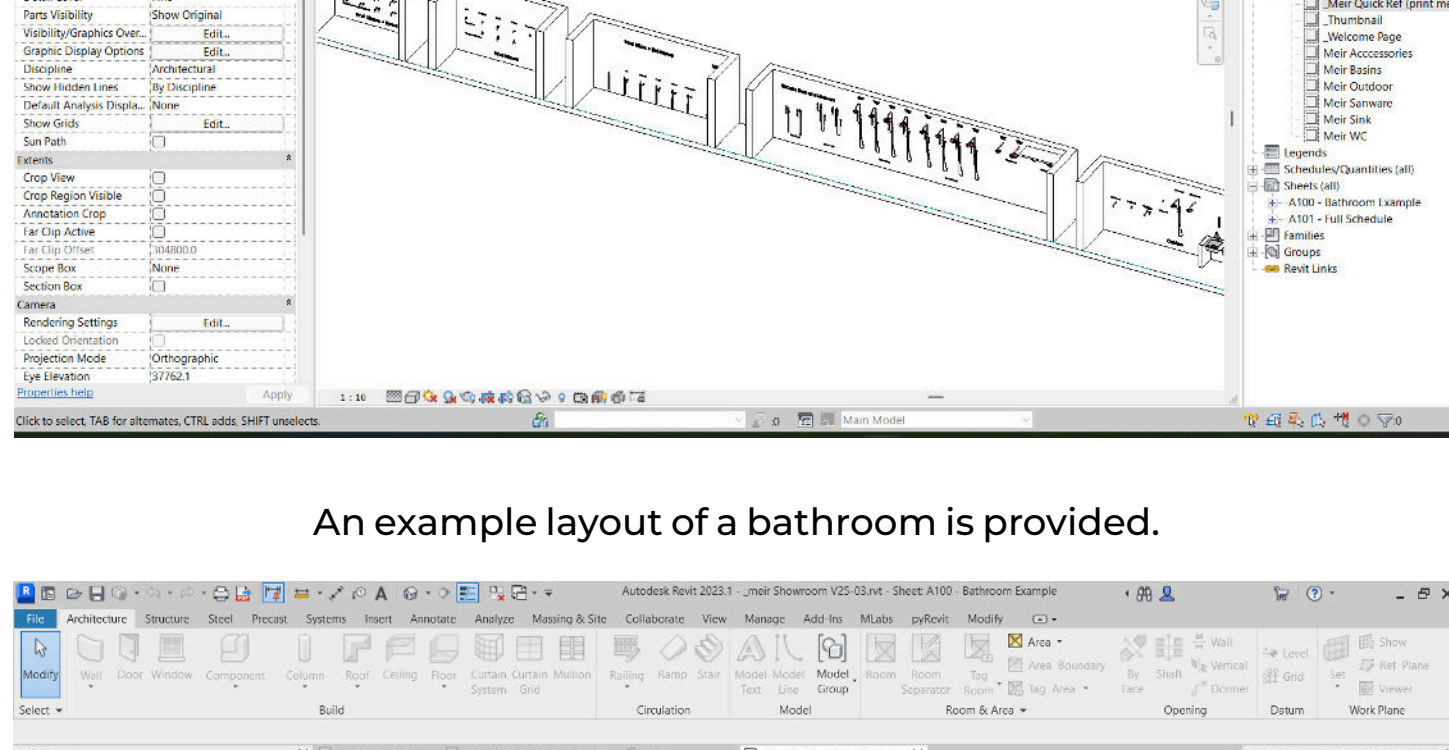


4

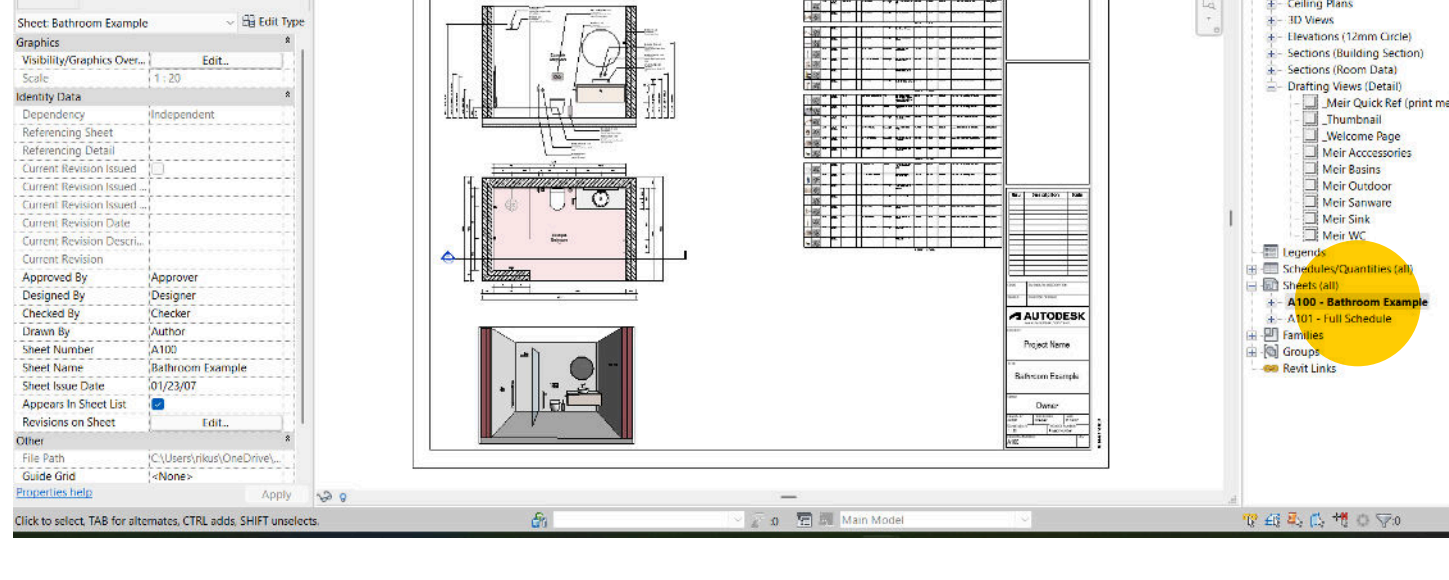
Open the Showroom File.

Version changes with new product or pricing updates.

- Explore product setup and product parameters.
- Familiarise yourself with product parameters



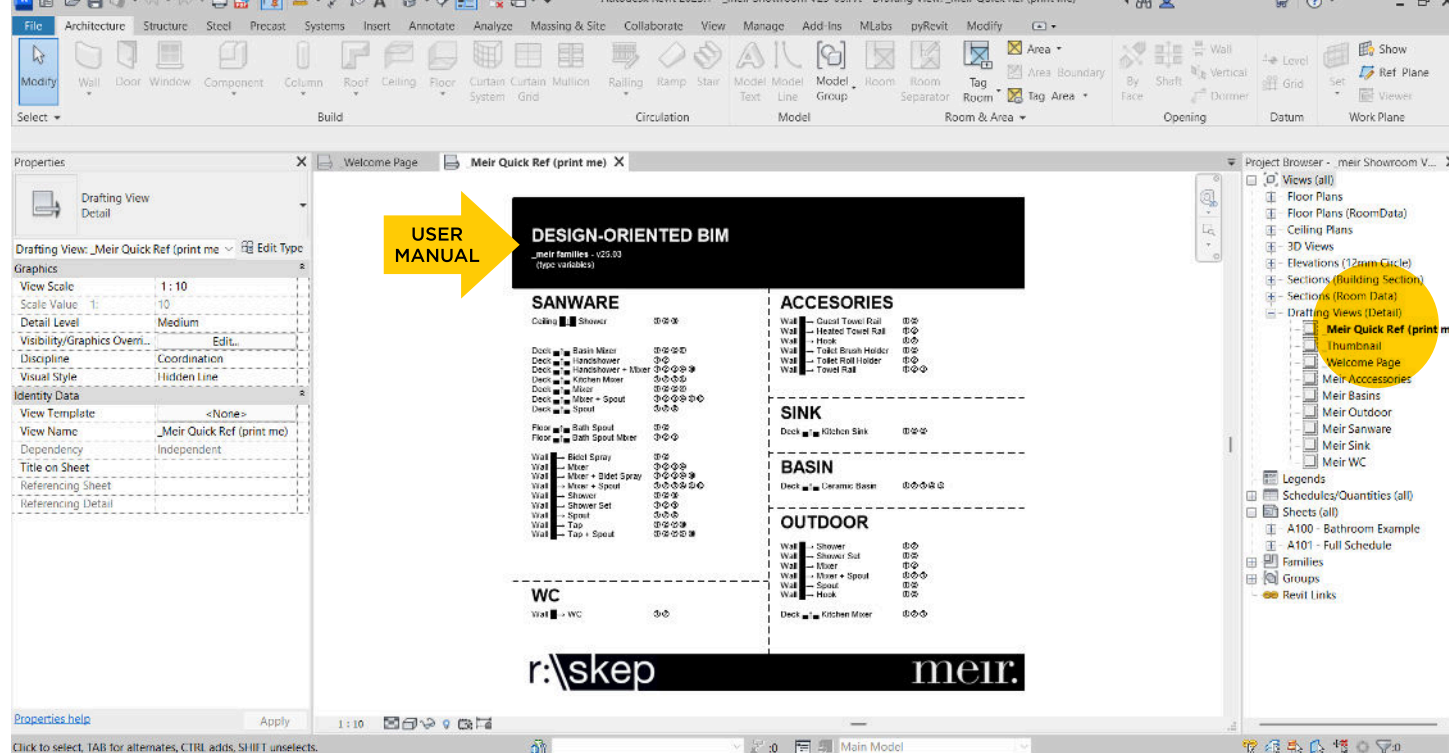
An example layout of a bathroom is provided.



5

Print quick reference.

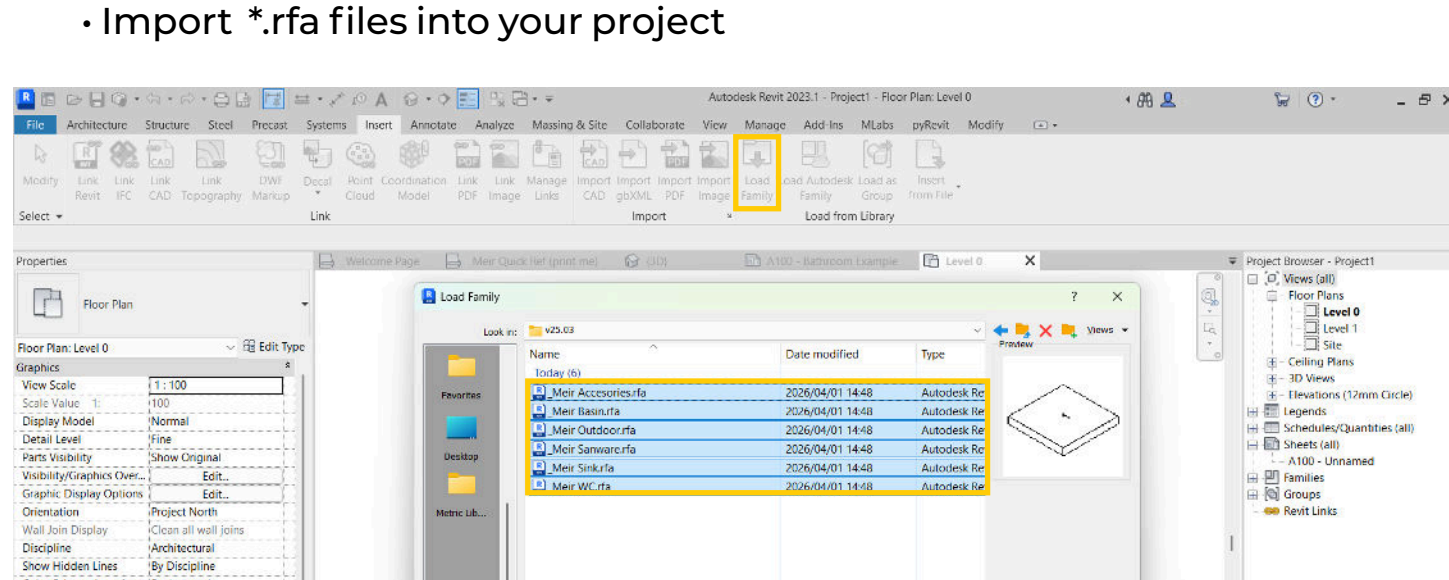
User Manual – the BIM system logic explained, noting family types and associated variables.



6

Load Families.

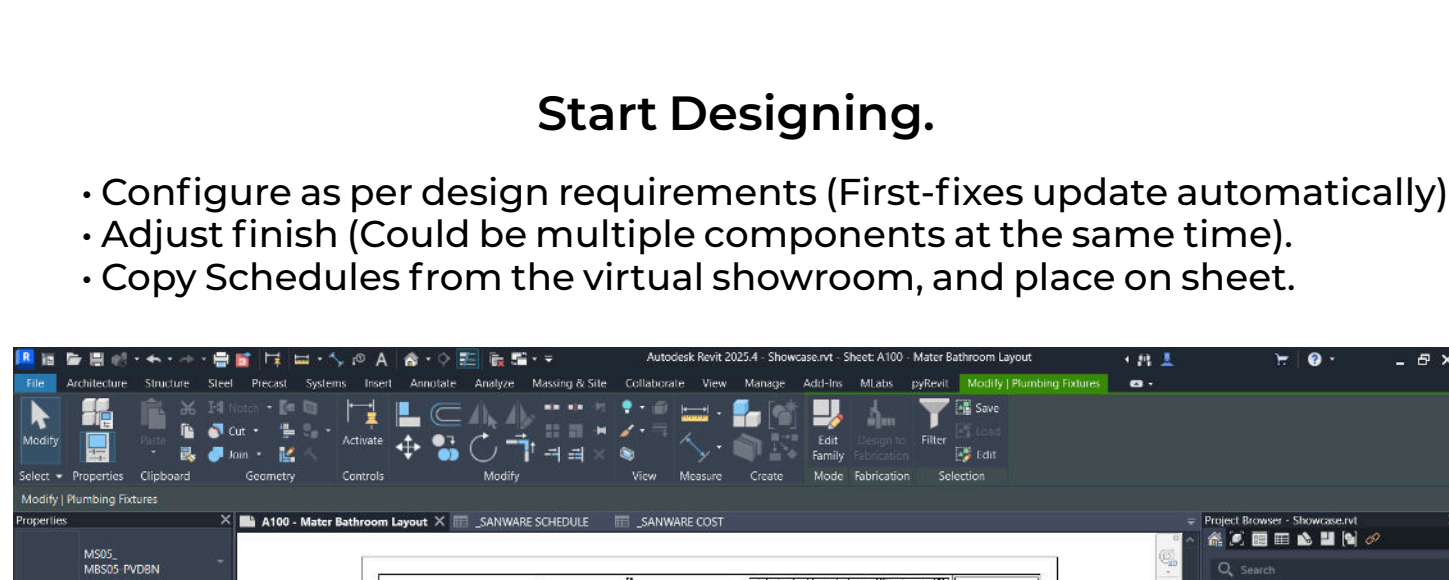
- Import *.rfa files into your project



7

Start Designing.

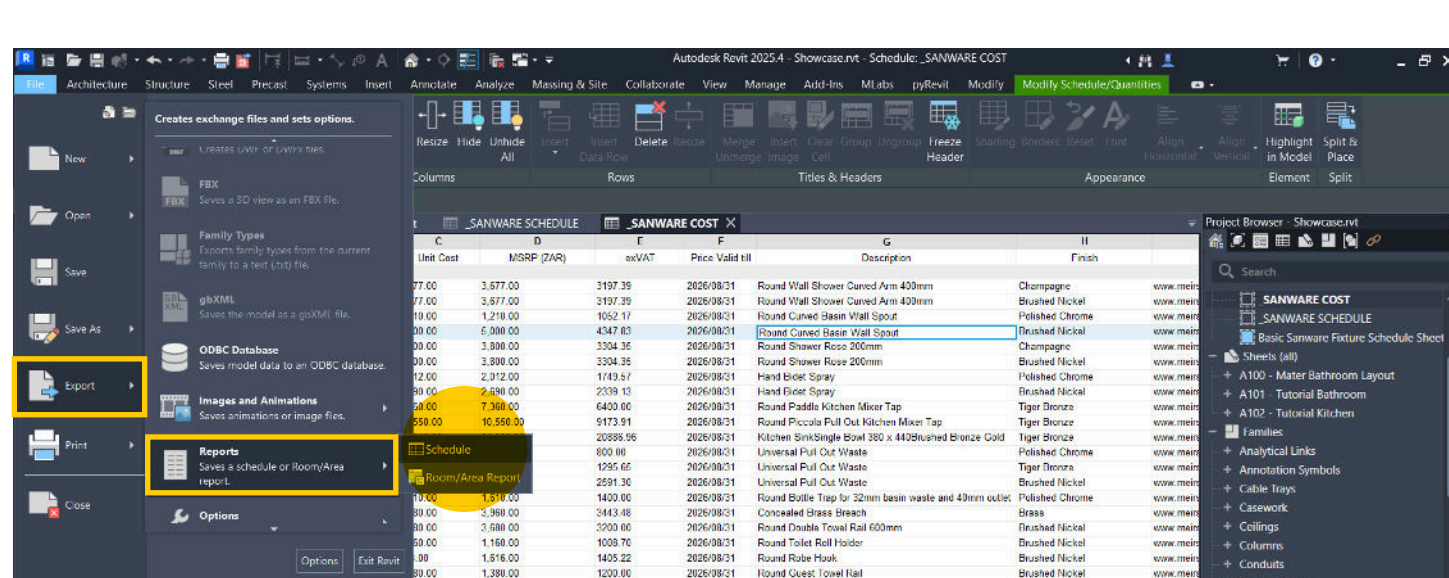
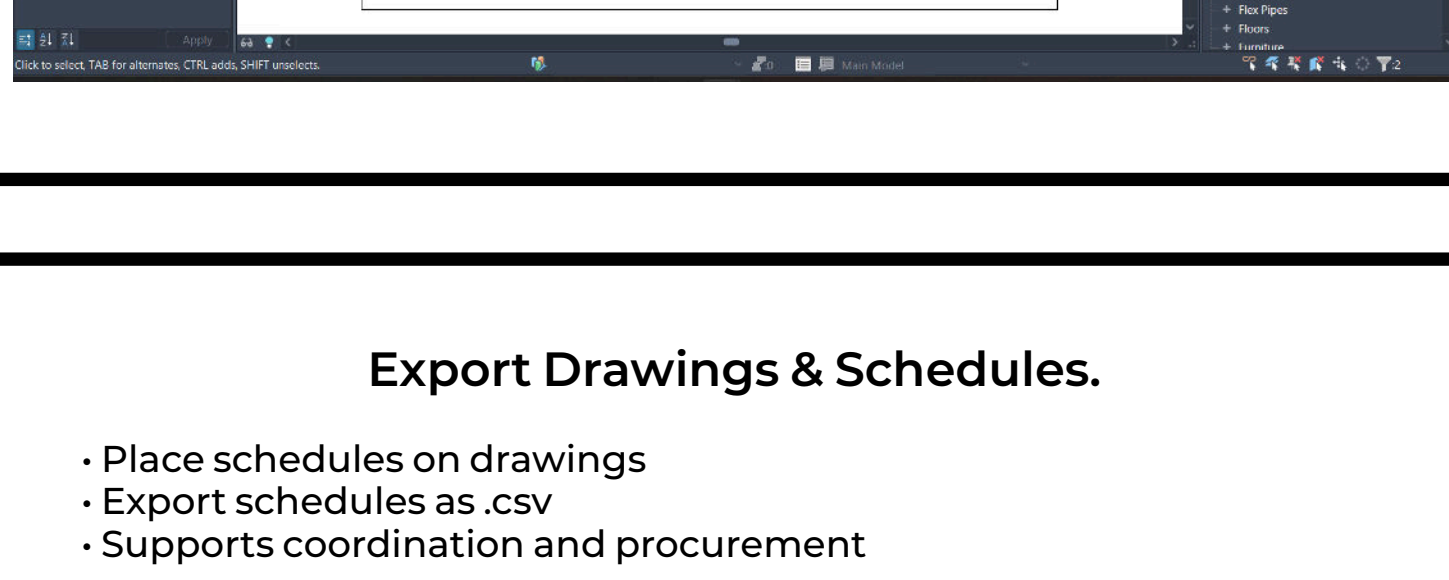
- Configure as per design requirements (First-fixes update automatically)
- Adjust finish (Could be multiple components at the same time).
- Copy Schedules from the virtual showroom, and place on sheet.



8

Export Drawings & Schedules.

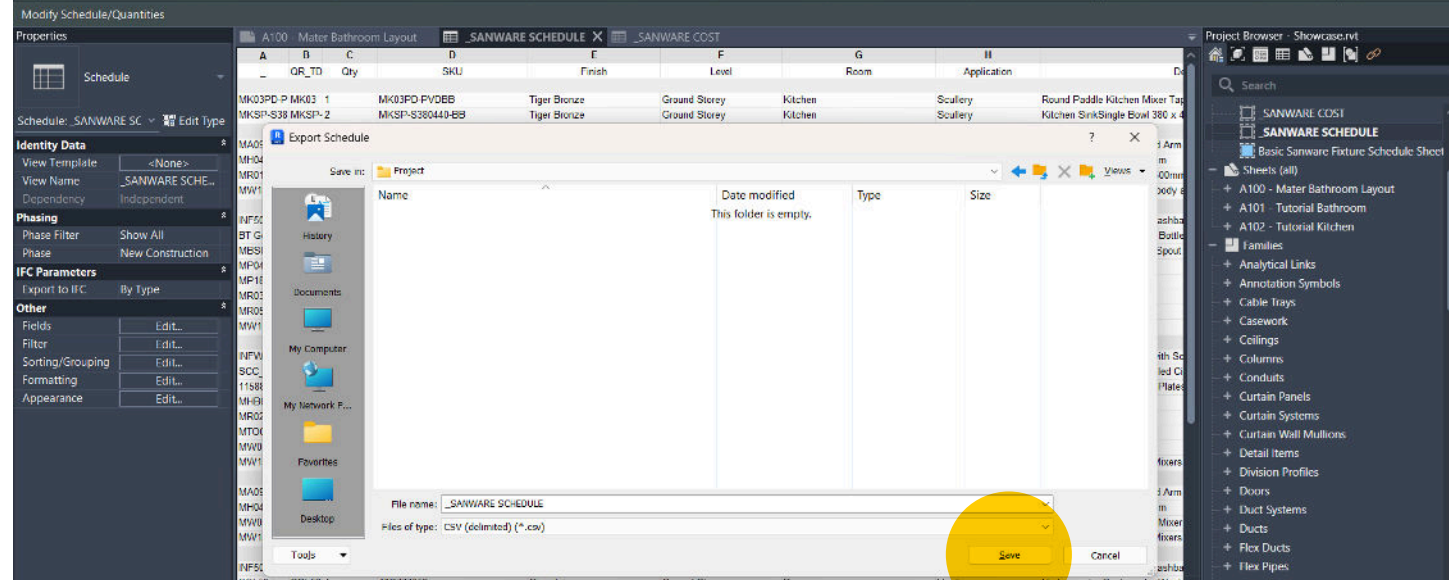
- Place schedules on drawings
- Support schedules as .csv
- Supports coordination and procurement



9

Tutorials.

Short 30-second videos are available for common workflows. A link to the videos is in the download email.



10

Important Notes.

- Always use latest files
- Do not edit families directly

11

Support.

Sales & Distribution: SIBO Trading | +27 21 510 0489 | sales@sibotrading.co.za

BIM Support: meir@skp.africa | +27 69 663 9340 (WhatsApp)